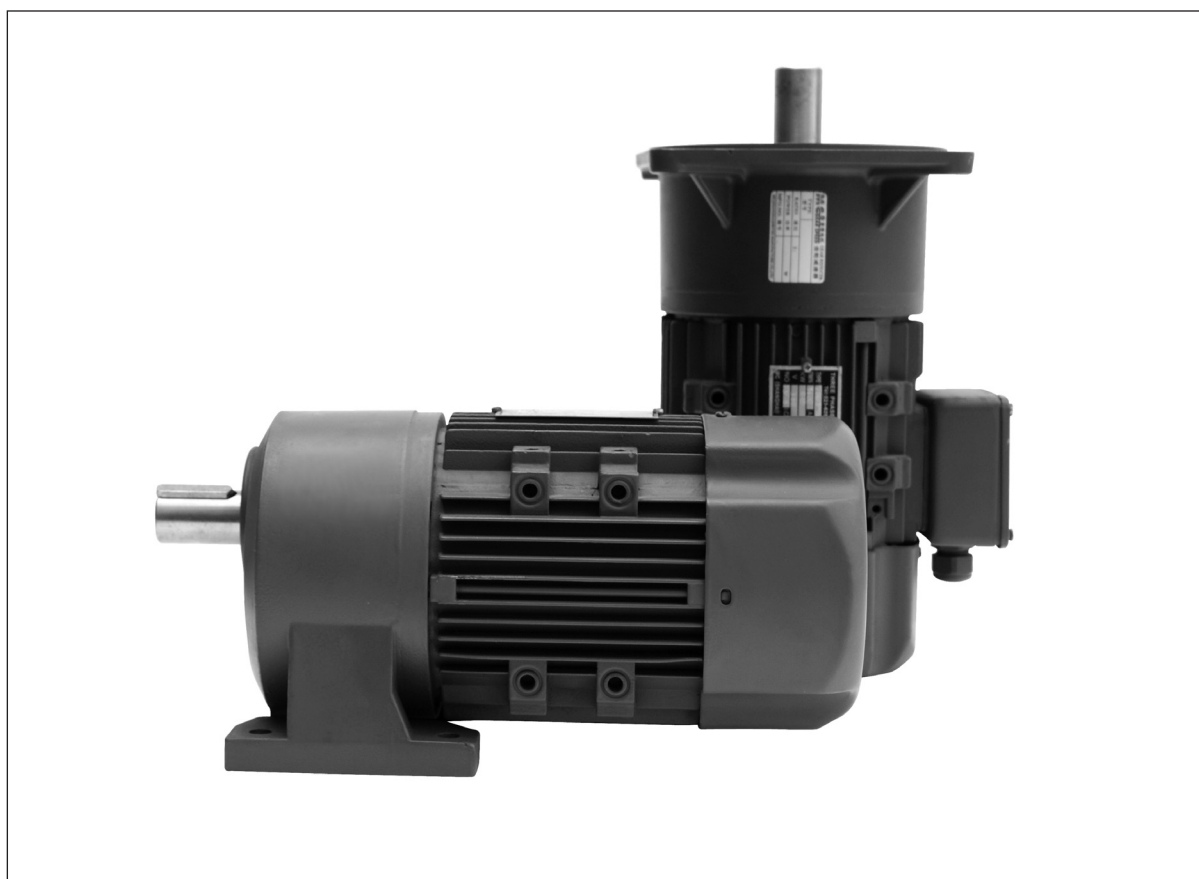


G系列斜齿轮减速机

G Series Helical Gear Motor

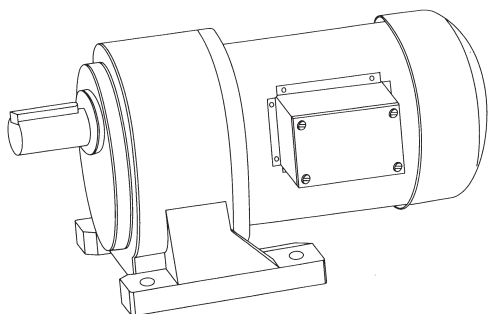
| | | | |
|--------|-------|---------------------------------|-------|
| 产品外形 | 2-2 | Products Figure | 2-2 |
| 型号标记 | 3-3 | Designation | 3-3 |
| 电机配置说明 | 4-4 | Configuration of Electric Motor | 4-4 |
| 安装位置 | 4-4 | Mounting Position | 4-8 |
| 技术参数 | 5-11 | Technical Data | 5-11 |
| 安装尺寸 | 12-19 | Mounting Dimensions | 12-19 |



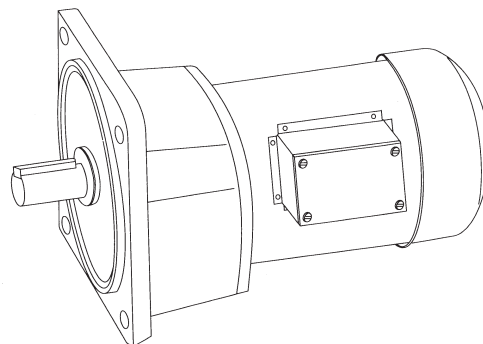
产品外形

Products Figure

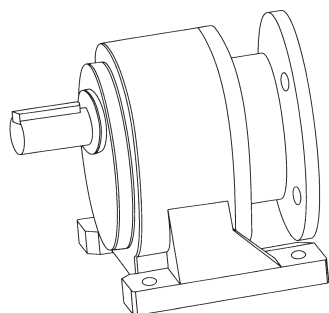
G..W



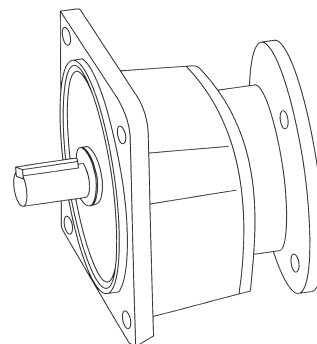
G..F



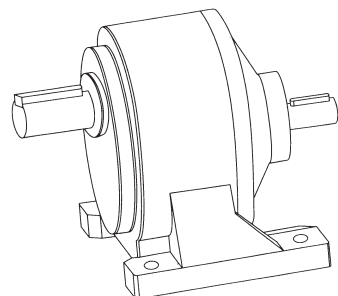
G..W..B5



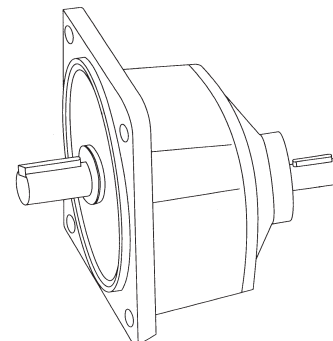
G..F..B5



G..W..Z



G..F..Z



型号标记

Designation



gear unit type:G
 gear housing material
 L:aluminium housing(18,22,28)
 H:casting iron housing(32,40,50)
 mounting type
 W:foot mounted
 F:flange mounted
 gear unit size:18,22,28,32,40,50
 connect with universal motor,omit sign
 S:connect with brake motor
 K:connect with IEC flange
 Z:with input shaft
 with motor,indicate power
 with IEC flange,indicate flange frame
 transmission ratio
 terminal box position
 omit sign default position

标记事例

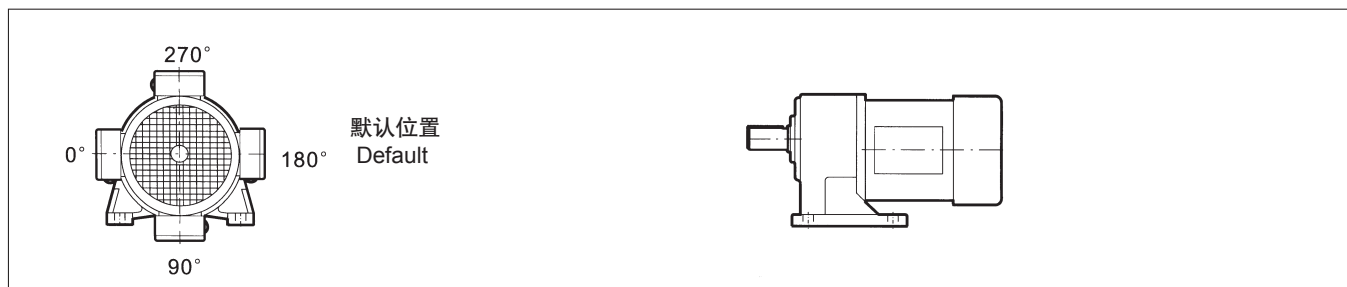
- A GHW40Z-50
 底脚安装,铸铁壳体,机型号40,传动比50
- B GLF28-550-50
 法兰安装,铝合金壳体,机型号28,普通电机550W,传动比50,接线盒为默认位置180。
- C GLW28K-80B5-30
 底脚安装,铝合金壳体,机型号28,IEC过渡法兰80B5,传动比30
- D GLF28S-550-50-0
 法兰安装,铝合金壳体,机型号28,制动电机550W,传动比50,接线盒位置0°

sign Example

- A GHW40Z-50
 foot-mounted,iron casting housing,gear unit size 40,with input shaft,transmission ratio 50
- B GLF28-550-50
 flange-mounted,aluminium housing,gear unit size 28,with universal motor 550w,transmission ratio 50,terminal box position at default 180 degree.
- C GLW28K-80B5-30
 flange-mounted,aluminium housing,gear unit size 28nwith IEC motor flange 80B5,transmission ratio 30.
- D GLF28S-550-50-0
 flange-mounted,aluminium housing,gear unit size 28,with brake motor 550w, transmission ratio 50, terminal box position at 0 degree

接线盒位置

Terminal Box Position



电机配置说明

Configuration of Electric Motor

Y系列三相异步电动机

- 1 本系列减速机标准配置Y系列普通三相异步感应电机；
- 2 电机电压：380V/50Hz；
- 3 电机防护等级IP54，绝缘等级F，B级温升；
- 4 环境温度不超过40℃，不低于-40℃；
- 5 连续工作制S1；
- 6 海拔高度不超过1000m；
- 7 冷却方式为C0141（风扇自冷）；
- 8 100及以下规格为“Y”接法，112M及以上规格为“△”接法；
- 9 优先选用4极电机；
- 10 电机技术参数见第189-194页

YEJ系列三相异步制动电机

- 1 三相异步制动电机为普通电机的基础上附加制动器；
- 2 电机电压：380V/50Hz；
- 3 制动器电压：规格71~100: DC99V
规格112~200: DC170V
- 4 配置单相AC220/50Hz整流器；
- 5 电机防护等级IP54，绝缘等级F，B级升温；
- 6 环境温度不超过40℃，不低于-40℃
- 7 连续工作制S1；
- 8 海拔高度不超过1000m；
- 9 冷却方式为C0141（风扇自冷）
- 10 100及以下规格为“Y”接法，112M及以上规格为“△”
- 11 优先选用4极电机；
- 12 电机技术参照数见第189-194页

特殊电机

- 1 选用包括防爆电机，变频电机，多速电机等特殊电机，本公司提供IEC标准电机法兰接口，接口尺寸见19页；
- 2 异频率，异电压电机，请联系本公司技术部；
- 3 使用环境温度不在-40~40℃ 范围内，请联系本公司技术部；
- 4 更高的绝缘等级及防护等级，请联系本公司技术部。

安装位置

- 1 本系列减速机采用全封闭，全寿命设计，采用齿轮合成润滑脂润滑，可以任意安位置装，定货时无须指明安装位置。

Y series Three-phase Asynchronous Brake Motor

- 1 this series gear unit configure three-phase asynchronous electric motor;
- 2 voltage:380V 50Hz;
- 3 protection class:IP54,insulation class:F temperature rising class:B;
- 4 ambient temperature:-15~40℃
- 5 continue working duty:S1;
- 6 altitude less than 1000m;
- 7 self-cooling with fan:C141;
- 8 within frame 100, follow connection Y, from frame 112, follow connection Δ;
- 9 first select 4 motor;
- 10 technical data on page 189-194.

YEJ series Three-phase Asynchronous Brake Motor

- 1 base on Y series motor, add a brake;
- 2 voltage:380V/50Hz;
- 3 brake voltage:frame:71~100 DC99V
frame:112~200 DC170V;
- 4 with single phase AC200V/50Hz rectifier;
- 5 protection class:IP54,insulation class:F,temperature rising class:B;
- 6 ambient temperature:-40~40℃;
- 7 continue working duty:S1;
- 8 ALTITUDE LESS THAN 1000m;
- 9 self-cooling with fan:C0141;
- 10 upon to frame 100, follow connection Y, from frame 112, follow connection Δ;
- 11 first select 4, 6, 8 poles motor;
- 12 technical data on page 189-194

Customized motor

- 1 others like explosion proof, inverter motor or multi-speed motor coupled by adaptor, the dimensions on page 19.
- 2 need different frequency and voltage, please contact us.
- 3 ambient temperature is out of -40~40℃, please contact us.
- 4 for higher insulation and protection class, please contact us.

Mounting positions

- 1 completely closed and long-time design for this series gear motor, lubricated by synthetical grease, needn't indicating the mounting position.

技术参数

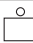
Technical Data

符号意义

Key to Symbols

①
↓

P₁=180W

| NA rpm | M ₂ Nm | i | Fr ₂ MAX[N] | Type | Gear unit | Motor size |  Kg |
|-----------|----------------------|-----|------------------------|------------|-----------|------------|---|
| 56 | 29 | 25 | 1200 | GLW GLF | 18 | 63M2-4 | 8.5 |
| 70 | 23 | 20 | 1100 | | | | |
| 93 | 17 | 15 | 800 | | | | |
| 140 | 12 | 10 | 550 | | | | |
| 280 | 5.8 | 5 | 250 | | | | |
| 467 | 3.5 | 3 | 200 | | | | |
| ② ↑ | ③ ↑ | ④ ↑ | ⑤ ↑ | ⑥ ↑ | ⑦ ↑ | ⑧ ↑ | ⑨ ↑ |

1 电机功率

2 输出转速

3 输出转矩

4 减速比

5 输出轴中最大点载荷

6 减速机类型

7 减速机规格

8 电机型号

9 大概重量

1 motor power

2 output speed

3 output torque

4 transmission ratio

5 maximum load on middle output shaft

6 gear unit type

7 gear unit type

8 motor frame

9 approximate weight

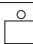
注意!

本系列减速机减速比与功率的匹配有所变动, 新的设计建议按此技术参数选型

ATTENTION

some of the technical data updated,suggest customer selet the gear motor follow this version for new design.

技术参数
Technical Data

| P₁=120W | | | | | | | |
|---------------------------|----------------------------|----------|-----------------------------|-------------|------------------|-------------------|---|
| NA rpm | M₂ Nm | i | Fr₂MAX[N] | Type | Gear unit | Motor size |  Kg |
| 1.2 | 490 | 1200 | 10200 | | | | |
| 1.6 | 490 | 900 | 7200 | GHW | 32/22 | 63M1-4 | 23 |
| 1.9 | 490 | 750 | 5900 | GHF | 32/22 | 63M1-4 | 23 |
| 2.3 | 432 | 600 | 5200 | | | | |
| 3.1 | 230 | 450 | 4080 | GLW | 28/18 | 63M1-4 | 12.5 |
| 3.7 | 230 | 375 | 3360 | GLF | 28/18 | 63M1-4 | 12.5 |
| 4.7 | 216 | 300 | 2800 | | | | |
| 7.0 | 137 | 200 | 3200 | | | | |
| 8.8 | 122 | 160 | 2800 | | | | |
| 12 | 91 | 120 | 2300 | GLW | 22 | 63M1-4 | 8 |
| 14 | 76 | 100 | 1750 | GLF | 22 | 63M1-4 | 8 |
| 18 | 61 | 80 | 1700 | | | | |
| 23 | 46 | 60 | 1650 | | | | |
| 28 | 38 | 50 | 1600 | | | | |
| 35 | 30 | 40 | 1500 | | | | |
| 47 | 23 | 30 | 1350 | | | | |
| 56 | 19 | 25 | 1200 | GLW | 18 | 63M1-4 | 7.5 |
| 70 | 16 | 20 | 1050 | GLF | 18 | 63M1-4 | 7.5 |
| 93 | 12 | 15 | 750 | | | | |
| 140 | 7.8 | 10 | 500 | | | | |
| 280 | 3.9 | 5 | 200 | | | | |
| 467 | 2.3 | 3 | 180 | | | | |
| P₁=180W | | | | | | | |
| 1.2 | 780 | 1200 | 15300 | | | | |
| 1.6 | 780 | 900 | 11500 | GHW | 40/28 | 63M2-4 | 28.3 |
| 1.9 | 780 | 750 | 9200 | GHF | 40/28 | 63M2-4 | 28.3 |
| 2.3 | 648 | 600 | 7600 | | | | |
| 3.1 | 486 | 450 | 7400 | GHW | 32/22 | 63M2-4 | 23.5 |
| 3.7 | 405 | 375 | 6300 | GHF | 32/22 | 63M2-4 | 23.5 |
| 4.7 | 324 | 300 | 5000 | | | | |
| 7.0 | 228 | 200 | 2800 | | | | |
| 8.8 | 183 | 160 | 2750 | GLW | 28 | 63M2-4 | 11 |
| 12 | 137 | 120 | 2650 | GLF | 28 | 63M2-4 | 11 |
| 14 | 114 | 100 | 5050 | | | | |
| 14 | 114 | 100 | 1750 | | | | |
| 18 | 91 | 80 | 1700 | | | | |
| 23 | 69 | 60 | 1650 | GLW | 22 | 63M2-4 | 8.5 |
| 28 | 57 | 50 | 1650 | GLF | 22 | 63M2-4 | 8.5 |
| 35 | 46 | 40 | 1600 | | | | |
| 47 | 34 | 30 | 1550 | | | | |

技术参数

Technical Data

| | | | | | | | |
|---------------------------|--|--|--|--|--|--|--|
| P₁=180W | | | | | | | |
|---------------------------|--|--|--|--|--|--|--|

| NA rpm | M ₂ Nm | i | Fr ₂ MAX[N] | Type | Gear unit | Motor size | Kg |
|-----------|----------------------|----|------------------------|------|-----------|------------|-----|
| 56 | 29 | 25 | 1200 | | | | |
| 70 | 23 | 20 | 1100 | | | | |
| 93 | 17 | 15 | 800 | GLW | 18 | 63M2-4 | 8.5 |
| 140 | 12 | 10 | 550 | GLF | 18 | 63M2-4 | 8.5 |
| 280 | 5.8 | 5 | 250 | | | | |
| 467 | 3.5 | 3 | 200 | | | | |

| | | | | | | | |
|---------------------------|--|--|--|--|--|--|--|
| P₁=250W | | | | | | | |
|---------------------------|--|--|--|--|--|--|--|

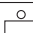
| | | | | | | | |
|-----|------|------|-------|-----|-------|--------|------|
| 1.2 | 1530 | 1200 | 20200 | | | | |
| 1.6 | 1315 | 900 | 15100 | GHW | 50/32 | 71M1-4 | 60.5 |
| 1.9 | 1100 | 750 | 12600 | GHF | 50/32 | 71M1-4 | 60.5 |
| 2.3 | 900 | 600 | 9700 | | | | |
| 3.1 | 675 | 450 | 7700 | | | | |
| 3.7 | 563 | 375 | 7000 | GHW | 40/28 | 71M1-4 | 28.8 |
| 4.7 | 450 | 300 | 5600 | GHF | 40/28 | 71M1-4 | 28.8 |
| 7.0 | 317 | 200 | 5200 | | | | |
| 8.8 | 254 | 160 | 5100 | GHW | 32 | 71M1-4 | 21.5 |
| 12 | 190 | 120 | 4800 | GHF | 32 | 71M1-4 | 21.5 |
| 14 | 159 | 100 | 4700 | | | | |
| 14 | 159 | 100 | 5050 | | | | |
| 18 | 127 | 80 | 4300 | | | | |
| 23 | 95 | 60 | 3600 | GLW | 28 | 71M1-4 | 11.5 |
| 28 | 79 | 50 | 3300 | GLF | 28 | 71M1-4 | 11.5 |
| 35 | 63 | 40 | 2650 | | | | |
| 47 | 48 | 30 | 2200 | | | | |
| 56 | 40 | 25 | 1500 | | | | |
| 70 | 32 | 20 | 1400 | | | | |
| 93 | 24 | 15 | 1100 | GLW | 22 | 71M1-4 | 11.5 |
| 140 | 16 | 10 | 800 | GLF | 22 | 71M1-4 | 11.5 |
| 280 | 8.1 | 5 | 400 | | | | |
| 467 | 4.9 | 3 | 300 | | | | |

| | | | | | | | |
|---------------------------|--|--|--|--|--|--|--|
| P₁=370W | | | | | | | |
|---------------------------|--|--|--|--|--|--|--|

| | | | | | | | |
|-----|------|------|-------|-----|-------|--------|------|
| 1.2 | 1530 | 1200 | 20200 | | | | |
| 1.6 | 1530 | 900 | 15100 | GHW | 50/32 | 71M2-4 | 62 |
| 1.9 | 1511 | 750 | 12600 | GHF | 50/32 | 71M2-4 | 62 |
| 2.3 | 1332 | 600 | 9700 | | | | |
| 3.1 | 975 | 450 | 7700 | | | | |
| 3.7 | 810 | 375 | 7000 | GHW | 40/28 | 71M2-4 | 29.3 |
| 4.7 | 666 | 300 | 5600 | GHF | 40/28 | 71M2-4 | 29.3 |

技术参数
Technical Data

P₁=370W

| NA rpm | M ₂ Nm | i | Fr ₂ MAX[N] | Type | Gear unit | Motor size |  Kg |
|-----------|----------------------|-----|------------------------|------|-----------|------------|---|
| 7.0 | 469 | 200 | 5200 | | | | |
| 8.8 | 375 | 160 | 5100 | GHW | 32 | 71M2-4 | 22 |
| 12 | 282 | 120 | 4800 | GHF | 32 | 71M2-4 | 22 |
| 14 | 235 | 100 | 4700 | | | | |
| 14 | 235 | 100 | 5050 | | | | |
| 18 | 188 | 80 | 4300 | | | | |
| 23 | 141 | 60 | 3600 | GLW | 28 | 71M2-4 | 12 |
| 28 | 117 | 50 | 3300 | GLF | 28 | 71M2-4 | 12 |
| 35 | 94 | 40 | 2650 | | | | |
| 47 | 70 | 30 | 2200 | | | | |
| 56 | 59 | 25 | 1500 | | | | |
| 70 | 48 | 20 | 1400 | | | | |
| 93 | 36 | 15 | 1100 | GLW | 22 | 71M2-4 | 9.5 |
| 140 | 24 | 10 | 800 | GLF | 22 | 71M2-4 | 9.5 |
| 280 | 12 | 5 | 400 | | | | |
| 467 | 7.2 | 3 | 300 | | | | |

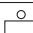
P₁=550W

| | | | | | | | |
|-----|------|-----|-------|------|-------|--------|------|
| 3.1 | 1485 | 450 | 18900 | GHW | 50/32 | 80M1-4 | 64 |
| 3.7 | 1238 | 375 | 15800 | GHF | 50/32 | 80M1-4 | 64 |
| 4.7 | 990 | 300 | 12600 | | | | |
| 7.0 | 698 | 200 | 10500 | | | | |
| 8.8 | 558 | 160 | 9500 | GHW | 40 | 80M1-4 | 32.3 |
| 12 | 419 | 120 | 8400 | GHF | 40 | 80M1-4 | 32.3 |
| 14 | 349 | 100 | 7500 | | | | |
| 14 | 349 | 100 | 7500 | | | | |
| 18 | 279 | 80 | 5950 | | | | |
| 23 | 209 | 60 | 5600 | GHW | 32 | 80M1-4 | 25 |
| 28 | 174 | 50 | 5000 | GHF | 32 | 80M1-4 | 25 |
| 35 | 140 | 40 | 4250 | | | | |
| 47 | 105 | 30 | 3500 | | | | |
| 56 | 87 | 25 | 3200 | | | | |
| 70 | 71 | 20 | 2600 | | | | |
| 93 | 53 | 15 | 1950 | GLW | 28 | 80M1-4 | 15 |
| 140 | 36 | 10 | 1700 | GL F | 28 | 80M1-4 | 15 |
| 280 | 18 | 5 | 880 | | | | |
| 467 | 11 | 3 | 700 | | | | |

技术参数

Technical Data

P₁=750W

| NA rpm | M ₂ Nm | i | Fr ₂ MAX[N] | Type | Gear unit | Motor size |  Kg |
|-----------|----------------------|-----|------------------------|------------|-----------|------------|---|
| 3.1 | 1530 | 450 | 18900 | GHW GHF | 50/32 | 80M2-4 | 65 |
| 3.7 | 1530 | 375 | 15800 | | | | |
| 4.7 | 1350 | 300 | 12600 | | | | |
| 7.0 | 951 | 200 | 10500 | GHW GHF | 40 | 80M2-4 | 28.3 |
| 8.8 | 761 | 160 | 9500 | | | | |
| 12 | 571 | 120 | 8400 | | | | |
| 14 | 476 | 100 | 7500 | | | | |
| 14 | 476 | 100 | 7500 | GHW GHF | 32 | 80M2-4 | 26 |
| 18 | 381 | 80 | 5950 | | | | |
| 23 | 285 | 60 | 5600 | | | | |
| 28 | 238 | 50 | 5000 | | | | |
| 35 | 190 | 40 | 4250 | | | | |
| 47 | 143 | 30 | 3500 | | | | |
| 56 | 119 | 25 | 3200 | | | | |
| 70 | 97 | 20 | 2600 | | | | |
| 93 | 73 | 15 | 1950 | | | | |
| 140 | 49 | 10 | 1700 | | | | |
| 280 | 24 | 5 | 880 | | | | |
| 467 | 15 | 3 | 750 | | | | |

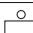
P₁=1100W

| | | | | | | | |
|-----|------|-----|-------|------------|----|-------|------|
| 7.0 | 1395 | 200 | 9700 | GHW GHF | 50 | 90S-4 | 56 |
| 8.8 | 1116 | 160 | 9500 | | | | |
| 12 | 837 | 120 | 9200 | | | | |
| 14 | 698 | 100 | 9000 | GHW GHF | 40 | 90S-4 | 34.3 |
| 14 | 698 | 100 | 11500 | | | | |
| 18 | 558 | 80 | 10100 | | | | |
| 23 | 419 | 60 | 8800 | | | | |
| 28 | 349 | 50 | 7500 | | | | |
| 35 | 279 | 40 | 6300 | | | | |
| 47 | 209 | 30 | 5200 | | | | |
| 56 | 174 | 25 | 4100 | GHW GHF | 32 | 90S-4 | 32 |
| 70 | 143 | 20 | 4100 | | | | |
| 93 | 107 | 15 | 3700 | | | | |
| 140 | 71 | 10 | 2500 | | | | |
| 280 | 36 | 5 | 1700 | | | | |
| 467 | 21 | 3 | 1400 | | | | |

技术参数

Technical Data

P₁=1500W

| NA rpm | M ₂ Nm | i | Fr ₂ MAX[N] | Type | Gear unit | Motor size |  Kg |
|-----------|----------------------|-----|------------------------|------------|-----------|------------|---|
| 8.8 | 1522 | 160 | 9500 | GHW GHF | 50 | 90L-4 | 59 |
| 12 | 1142 | 120 | 9200 | | | | |
| 14 | 951 | 100 | 9000 | | | | |
| 14 | 951 | 100 | 11500 | GHW GHF | 40 | 90L-4 | 37.3 |
| 18 | 761 | 80 | 10100 | | | | |
| 23 | 571 | 60 | 8800 | | | | |
| 28 | 476 | 50 | 7500 | | | | |
| 35 | 381 | 40 | 6300 | | | | |
| 47 | 285 | 30 | 5200 | | | | |
| 56 | 238 | 25 | 4100 | GHW GHF | 32 | 90L-4 | 35 |
| 70 | 194 | 20 | 4100 | | | | |
| 93 | 146 | 15 | 3700 | | | | |
| 140 | 97 | 10 | 2500 | | | | |
| 280 | 49 | 5 | 1700 | | | | |
| 467 | 29 | 3 | 1400 | | | | |

P₁=2200W

| | | | | | | | |
|-----|------|-----|------|------------|----|---------|------|
| 14 | 1395 | 100 | 8700 | GHW GHF | 50 | 100L1-4 | 62 |
| 18 | 1116 | 80 | 8500 | | | | |
| 23 | 837 | 60 | 8200 | | | | |
| 28 | 698 | 50 | 7800 | | | | |
| 35 | 558 | 40 | 7350 | | | | |
| 47 | 419 | 30 | 7100 | | | | |
| 56 | 349 | 25 | 4100 | GHW GHF | 50 | 100L1-4 | 40.3 |
| 70 | 285 | 20 | 4100 | | | | |
| 93 | 214 | 15 | 3700 | | | | |
| 140 | 143 | 10 | 2500 | | | | |
| 280 | 71 | 5 | 1700 | | | | |
| 467 | 43 | 3 | 1400 | | | | |


P₁=3000W

| | | | | | | | |
|----|------|----|------|------------|----|---------|----|
| 18 | 1522 | 80 | 8500 | GHW GHF | 50 | 100L2-4 | 66 |
| 23 | 1142 | 60 | 8200 | | | | |
| 28 | 951 | 50 | 7800 | | | | |
| 35 | 761 | 40 | 7350 | | | | |
| 47 | 571 | 30 | 7100 | | | | |

技术参数

Technical Data

P₁=3000W

| NA rpm | M ₂ Nm | i | Fr ₂ MAX[N] | Type | Gear unit | Motor size |  Kg |
|-----------|----------------------|----|------------------------|------|-----------|------------|---|
| 56 | 476 | 25 | 4100 | | | | |
| 70 | 389 | 20 | 4100 | | | | |
| 93 | 292 | 15 | 3700 | GHW | 40 | 100L2-4 | 44.3 |
| 140 | 194 | 10 | 2500 | GHF | 40 | 100L2-4 | 44.3 |
| 280 | 97 | 5 | 1700 | | | | |
| 467 | 58 | 3 | 1400 | | | | |

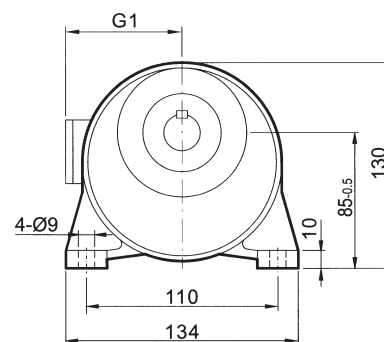
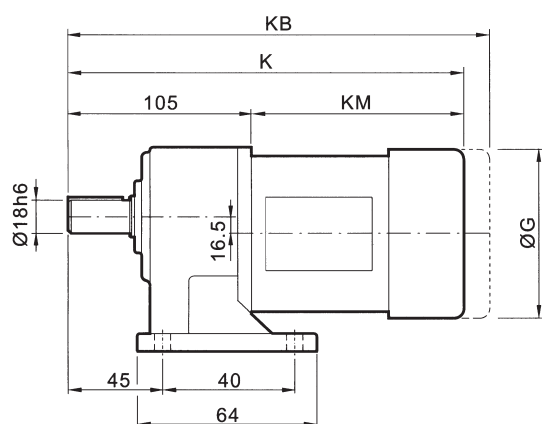
P₁=4000W

| | | | | | | | |
|-----|-----|----|------|-----|----|--------|----|
| 56 | 634 | 25 | 9600 | | | | |
| 70 | 518 | 20 | 8100 | | | | |
| 93 | 389 | 15 | 7200 | GHW | 50 | 112M-4 | 77 |
| 140 | 259 | 10 | 6400 | GHF | 50 | 112M-4 | 77 |
| 280 | 130 | 5 | 4300 | | | | |
| 467 | 78 | 3 | 4300 | | | | |

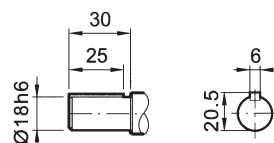
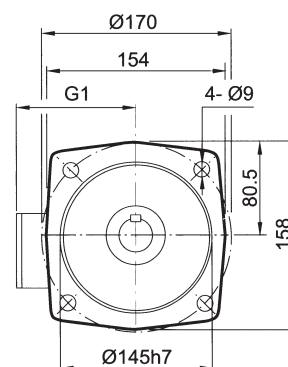
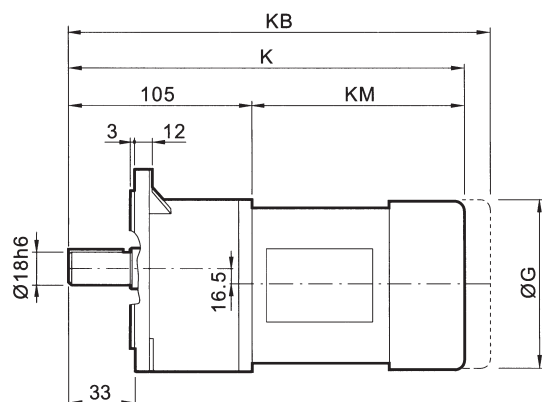
安装尺寸

Mounting dimensions

GLW18..



GLF18..



| 尺寸 | 电机规格 | Motor frame | | | | | | | | | |
|------------|-----------|-------------|--|--|--|--|--|--|--|--|--|
| Dimensions | 63 | | | | | | | | | | |
| G | 130 | | | | | | | | | | |
| G1 | 108 | | | | | | | | | | |
| K | 307 | | | | | | | | | | |
| KB | 383 | | | | | | | | | | |
| KM | 202 | | | | | | | | | | |

尺寸说明

以上尺寸为直联普通电机和制动电机尺寸；
KB为制动电机尺寸，其余为普通电机尺寸；
防爆电机，变频电机等需加过渡法兰，见19页。

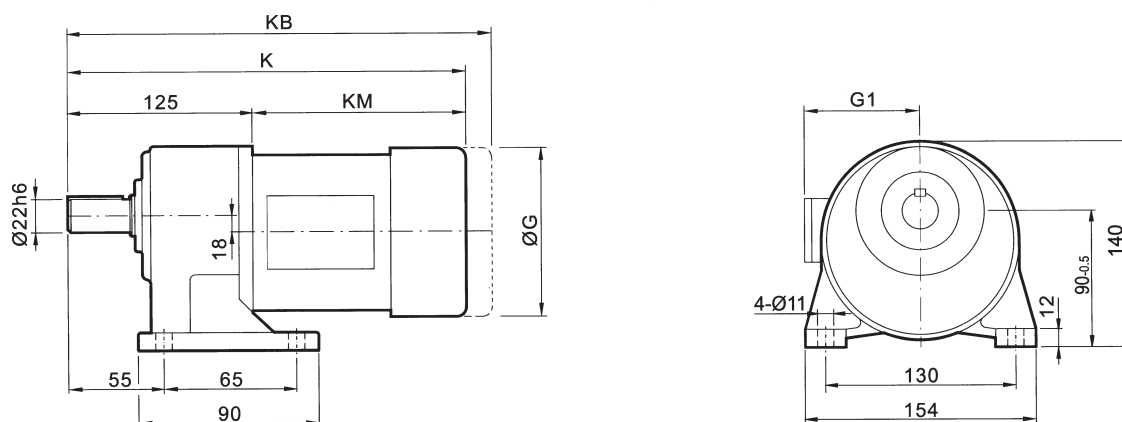
ATTENTION

Dimensions of universa and brake motor shown in upon table,the others like explosion,inverter motor coupled by adaptor,the dimension on page19.

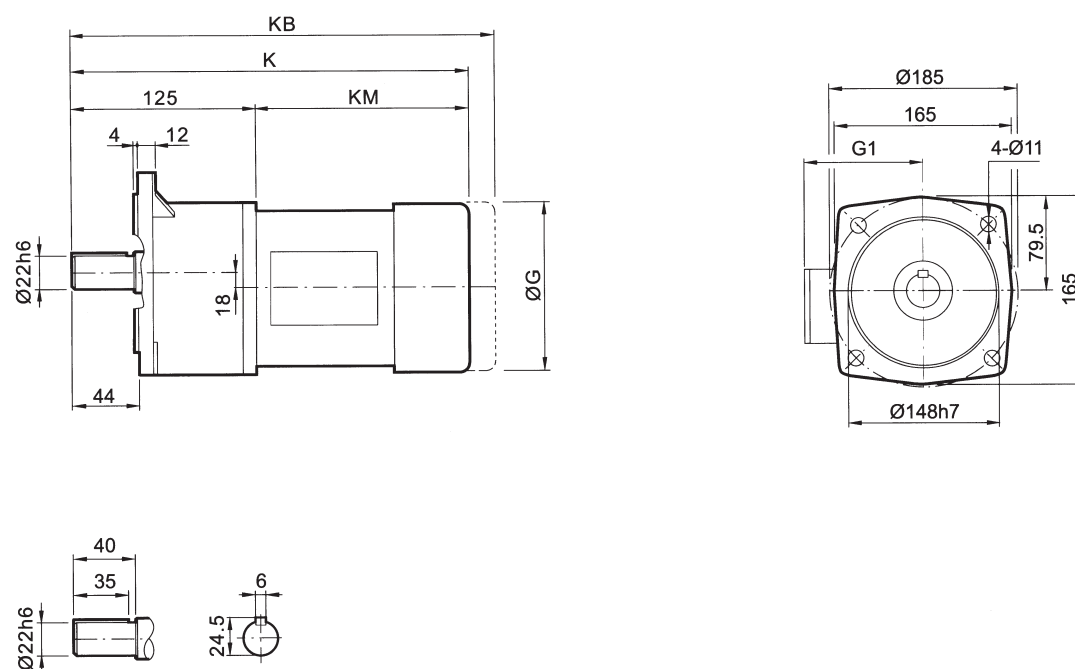
安装尺寸

Mounting dimensions

GLW22..



GLF22..



| 尺寸 Dimensions | 电机规格 Motor frame | | | | | | | | |
|------------------|---------------------|-----|--|--|--|--|--|--|--|
| | 63 | 71 | | | | | | | |
| G | 130 | 145 | | | | | | | |
| G1 | 108 | 110 | | | | | | | |
| K | 327 | 345 | | | | | | | |
| KB | 403 | 421 | | | | | | | |
| KM | 202 | 220 | | | | | | | |

尺寸说明

以上尺寸为直联普通电机和制动电机尺寸；
KB为制动电机尺寸，其余为普通电机尺寸；
防爆电机，变频电机等需加过渡法兰，见19页。

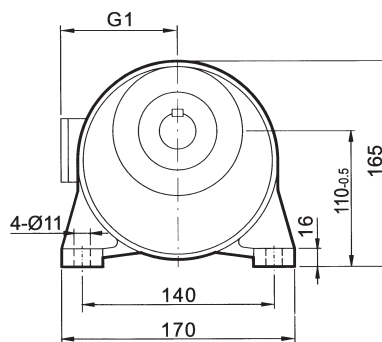
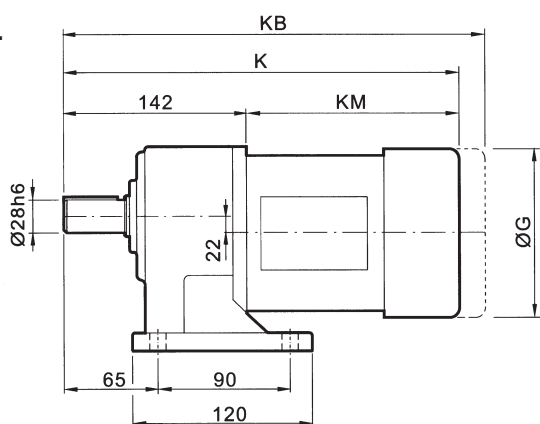
ATTENTION

Dimensions of universa and brake motor shown in upon table,the others like explosion,inverter motor coupled by adaptor,the dimension on page19.

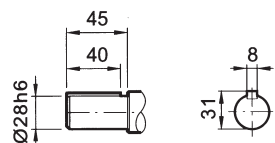
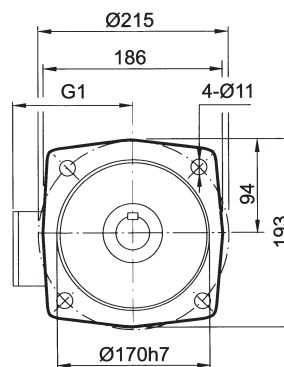
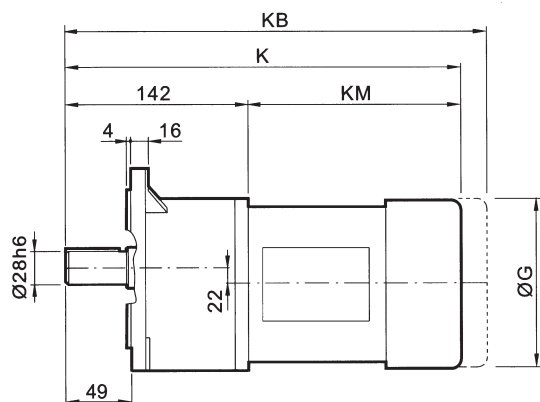
安装尺寸

Mounting dimensions

GLW28..



GLF28..



| 尺寸 Dimensions | 电机规格 Motor frame | | | | | | | | | |
|------------------|---------------------|-----|-----|--|--|--|--|--|--|--|
| | 63 | 71 | 80 | | | | | | | |
| G | 130 | 145 | 175 | | | | | | | |
| G1 | 108 | 110 | 145 | | | | | | | |
| K | 344 | 362 | 397 | | | | | | | |
| KB | 420 | 438 | 472 | | | | | | | |
| KM | 202 | 220 | 255 | | | | | | | |

尺寸说明

以上尺寸为直联普通电机和制动电机尺寸；
KB为制动电机尺寸，其余为普通电机尺寸；
防爆电机，变频电机等需加过渡法兰，见19页。

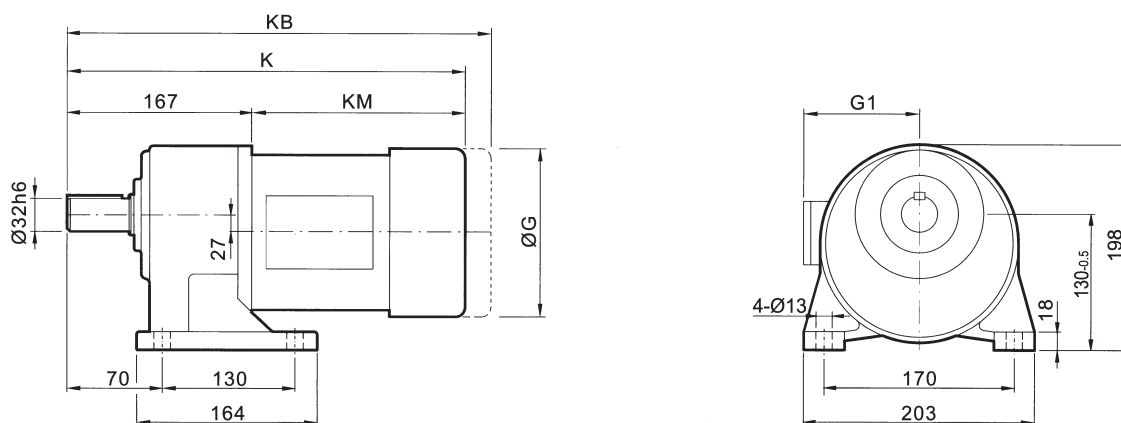
ATTENTION

Dimensions of universa and brake motor shown in upon table,the others like explosion,inverter motor coupled by adaptor,the dimension on page19.

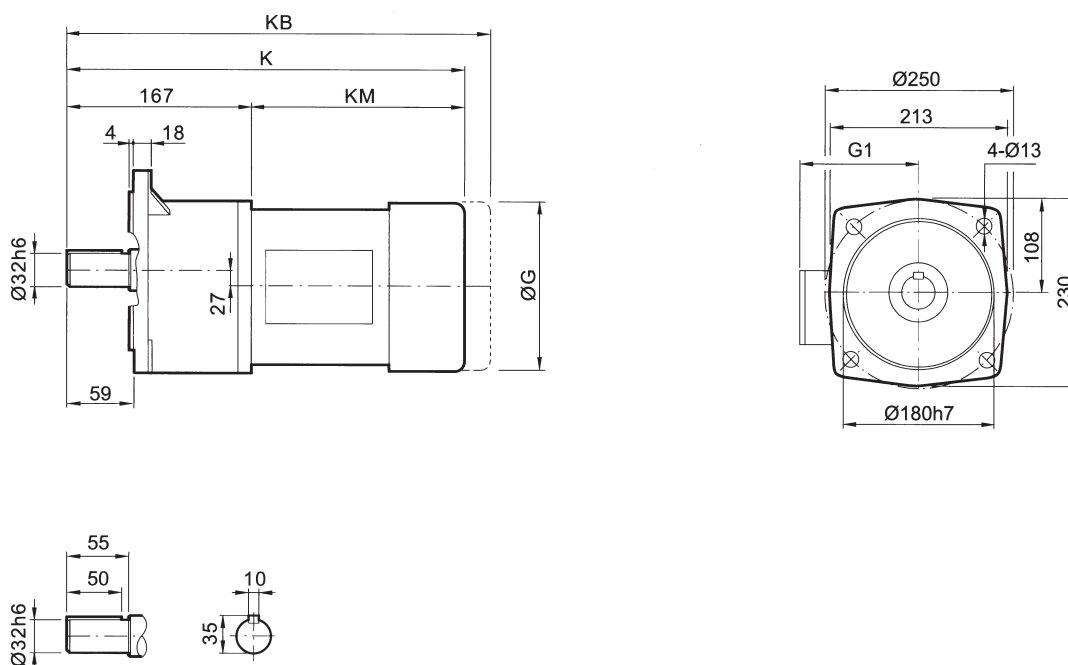
安装尺寸

Mounting dimensions

GHW32..



GHF32..



| 尺寸 Dimensions | 电机规格 Motor frame | | | | | | | | | |
|------------------|---------------------|-----|-----|--|--|--|--|--|--|--|
| | 71 | 80 | 90 | | | | | | | |
| G | 145 | 175 | 195 | | | | | | | |
| G1 | 110 | 145 | 150 | | | | | | | |
| K | 387 | 422 | 432 | | | | | | | |
| KB | 462 | 497 | 511 | | | | | | | |
| KM | 220 | 255 | 265 | | | | | | | |

尺寸说明

以上尺寸为直联普通电机和制动电机尺寸；
KB为制动电机尺寸,其余为普通电机尺寸；
防爆电机,变频电机等需加过渡法兰,见19页。

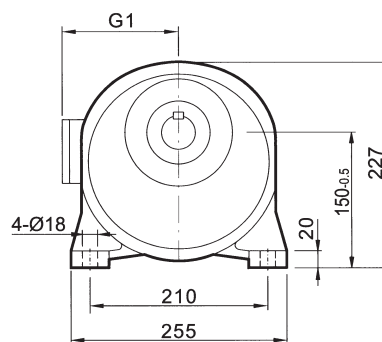
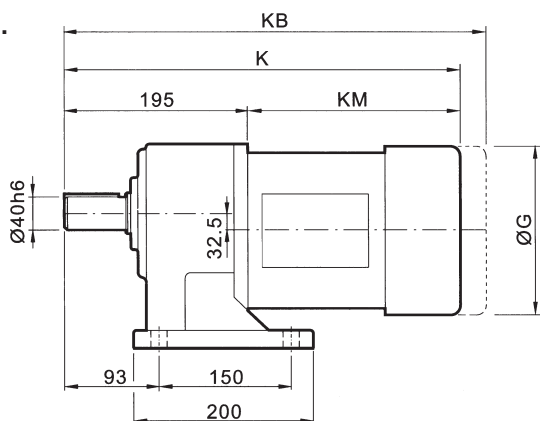
ATTENTION

Dimensions of universa and brake motor shown in upon table,the others like explosion,inverter motor coupled by adaptor,the dimension on page19.

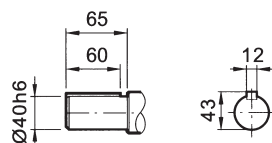
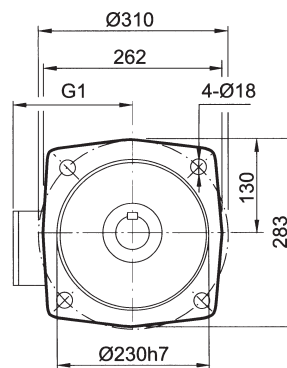
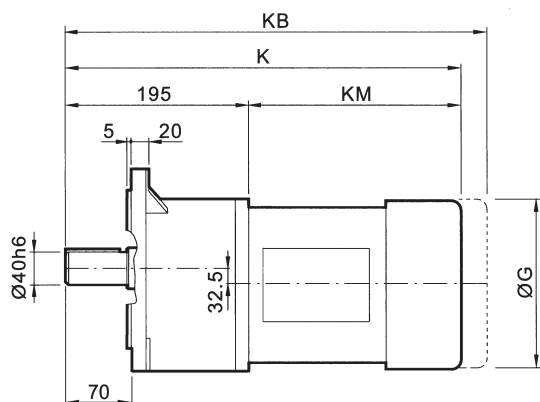
安装尺寸

Mounting dimensions

GHW40..



GHF40..



| 尺寸 Dimensions | 电机规格 Motor frame | | | | | | | | | | |
|------------------|---------------------|-----|-----|-----|--|--|--|--|--|--|--|
| | 80 | 90S | 90L | 100 | | | | | | | |
| G | 175 | 195 | 195 | 215 | | | | | | | |
| G1 | 145 | 150 | 150 | 175 | | | | | | | |
| K | 460 | 460 | 485 | 520 | | | | | | | |
| KB | 537 | 584 | 609 | 633 | | | | | | | |
| KM | 265 | 265 | 290 | 325 | | | | | | | |

尺寸说明

以上尺寸为直联普通电机和制动电机尺寸；
KB为制动电机尺寸,其余为普通电机尺寸；
防爆电机,变频电机等需加过渡法兰,见19页。

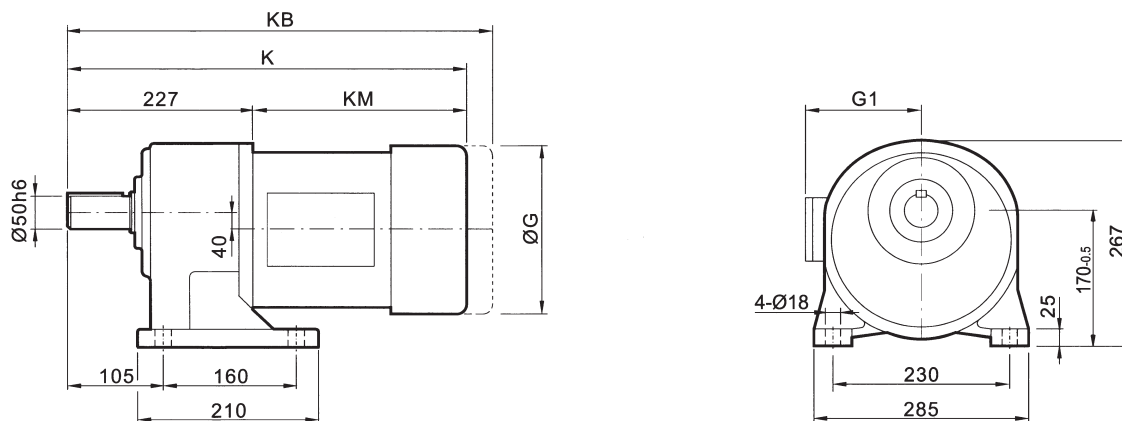
ATTENTION

Dimensions of universa and brake motor shown in upon table,the others like explosion,inverter motor coupled by adaptor,the dimension on page19.

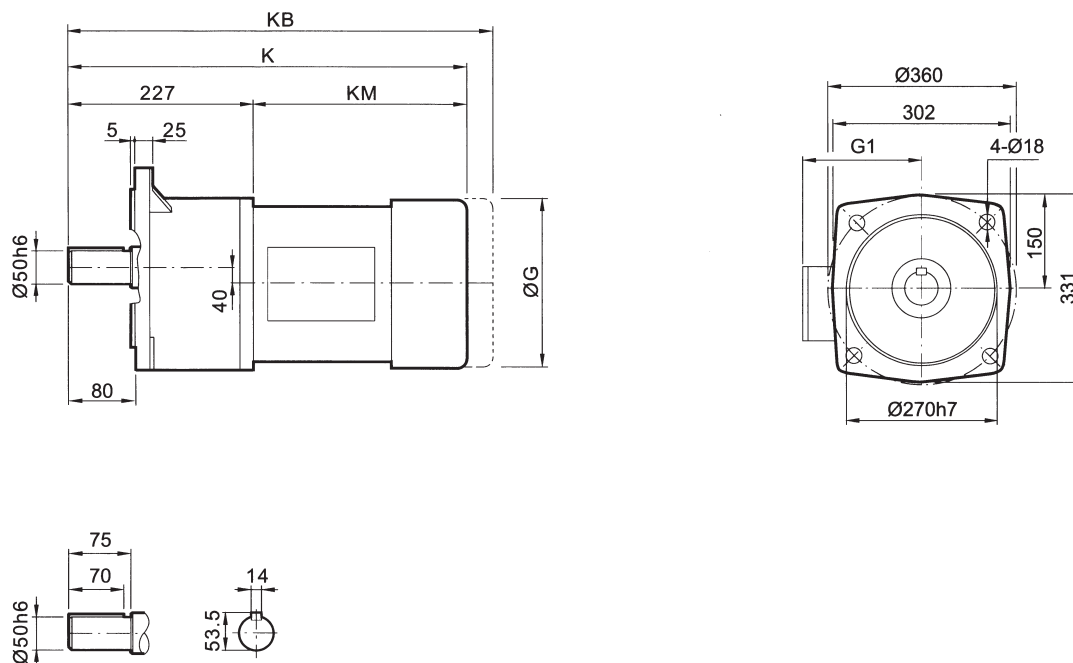
安装尺寸

Mounting dimensions

GHW50..



GHF 50..



| 尺寸 Dimensions | 电机规格 Motor frame | | | | | | | | | |
|------------------|---------------------|-----|------|------|--|--|--|--|--|--|
| | 90S | 90L | 100L | 112M | | | | | | |
| G | 195 | 195 | 215 | 240 | | | | | | |
| G1 | 150 | 150 | 175 | 185 | | | | | | |
| K | 492 | 507 | 552 | 567 | | | | | | |
| KB | 616 | 631 | 665 | 687 | | | | | | |
| KM | 265 | 280 | 325 | 340 | | | | | | |

尺寸说明

以上尺寸为直联普通电机和制动电机尺寸；
KB为制动电机尺寸,其余为普通电机尺寸；
防爆电机,变频电机等需加过渡法兰,见19页。

ATTENTION

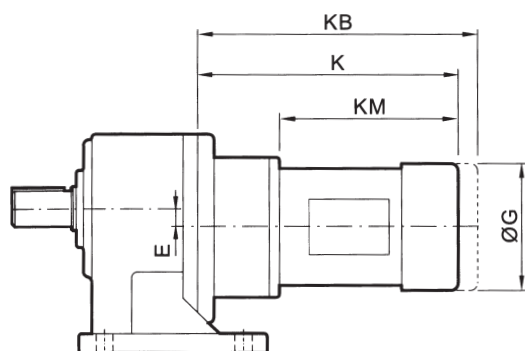
Dimensions of universa and brake motor shown in upon table,the others like explosion,inverter motor coupled by adaptor,the dimension on page19.

安装尺寸

Mounting dimensions

组合型尺寸

Combinations



| 减速机规格 Gear unit size | 电机规格 Motor frame | G | K | KB | KM | E |
|-------------------------|---------------------|----------|----------|-----------|-----------|----------|
| G..28/18 | 63.. | 130 | 277 | 353 | 202 | 38.5 |
| G..32/22 | 63.. | 130 | 287 | 363 | 202 | 45 |
| | 71.. | 145 | 305 | 381 | 220 | 45 |
| G..40/28 | 63.. | 132 | 309 | 375 | 202 | 54.5 |
| | 71.. | 145 | 317 | 393 | 220 | 54.5 |
| G..50/32 | 80.. | 175 | 367 | 442 | 265 | 67 |

尺寸说明

以上尺寸为直联普通电机和制动电机尺寸；
KB为制动电机尺寸，其余为普通电机尺寸；
防爆电机，变频电机等需加过渡法兰，见19页。

ATTENTION

Dimensions of universal and brake motor shown in upon table, the others like explosion, inverter motor coupled by adaptor, the dimension on page 19.

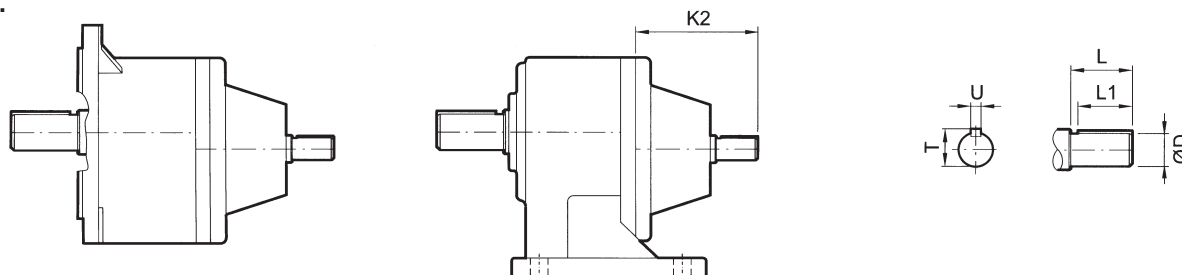
安装尺寸

Mounting dimensions

输入轴尺寸

With input shaft dimensions

G..Z..

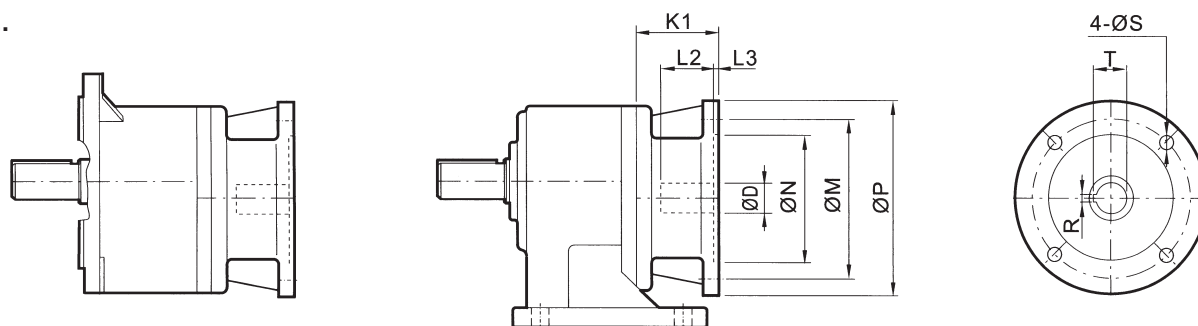


| 减速机规格 Gear unit size | D | L1 | L | U | T | K2 |
|-------------------------|----|----|----|----|------|-------|
| G..18 | 14 | 22 | 25 | 5 | 16 | 66 |
| G..22 | 14 | 22 | 25 | 5 | 16 | 66 |
| G..28 | 16 | 25 | 30 | 5 | 18 | 79 |
| G..32 | 19 | 25 | 30 | 6 | 21.5 | 86.5 |
| G..40 | 24 | 30 | 35 | 8 | 27 | 109.5 |
| G..50 | 35 | 45 | 50 | 10 | 38 | 125 |

输入法兰尺寸

With input flange dimensions

G..K..



| 减速机型号 Gear unit size | 电机规格 Motor frame | D | N | M | P | K1 | L2 | L3 | R | T | S |
|-------------------------|---------------------|----|-----|-----|-----|------|----|-----|---|------|----|
| G..18 | 63B5 | 11 | 95 | 115 | 140 | 45 | 23 | 4 | 4 | 12.8 | 10 |
| G..22 | 63B5 | 11 | 95 | 115 | 140 | 45 | 23 | 4 | 4 | 12.8 | 10 |
| | 71B5 | 14 | 110 | 130 | 160 | 55 | 30 | 4.5 | 5 | 16.3 | 10 |
| G..28 | 63B5 | 11 | 95 | 115 | 140 | 45 | 23 | 4 | 4 | 12.8 | 10 |
| | 71B5 | 14 | 110 | 130 | 160 | 55 | 30 | 4.5 | 5 | 16.3 | 10 |
| | 80B5 | 19 | 130 | 165 | 200 | 58.5 | 40 | 4.5 | 6 | 21.8 | 12 |
| G..32 | 71B5 | 14 | 110 | 130 | 160 | 55 | 30 | 4.5 | 5 | 16.3 | 10 |
| | 80B5 | 19 | 130 | 165 | 200 | 75 | 30 | 4.5 | 6 | 21.8 | 12 |
| | 90B5 | 24 | 130 | 165 | 200 | 75 | 40 | 4.5 | 8 | 27.3 | 12 |
| G..40 | 80B5 | 19 | 110 | 165 | 200 | 75 | 30 | 4.5 | 6 | 21.8 | 12 |
| | 90B5 | 24 | 130 | 165 | 200 | 75 | 40 | 4.5 | 8 | 27.3 | 12 |
| | 100B5 | 28 | 180 | 215 | 250 | 80.5 | 60 | 5 | 8 | 31.3 | 15 |
| G..50 | 90B5 | 24 | 130 | 165 | 200 | 75 | 40 | 4.5 | 8 | 27.3 | 12 |
| | 100B5 | 28 | 180 | 215 | 250 | 80.5 | 60 | 5 | 8 | 31.3 | 15 |
| | 112B5 | 28 | 180 | 215 | 250 | 80.5 | 60 | 5 | 8 | 31.3 | 15 |